

# BlackBerry Device Backup and Restore Quick Start Guide

## BlackBerry® Edition

### To perform a backup of your BlackBerry smartphone data, complete the following steps

- A. Connect the BlackBerry® smartphone to the computer that is running the BlackBerry® Desktop Manager using a USB cable.
- B. Open the BlackBerry Desktop Manager and Click on the “Device” menu at top. Next, select “Back up...” in the drop-down menu. [Figure 1-1]
- C. You have the option of backing up all device data, or selected data.
  1. To perform a full backup, verify that “Full (all device data and settings)” is selected for the backup type.
  2. To perform a backup of specific data, select “Custom (selected data only),” and then check the box for each type of data you wish to back up. [Figure 1-2]
- D. Enter a name for your backup file in the “File name” field, select a location to save the backup file, and click “Back up.” You will then see a progress window. You will receive a confirmation when backup is complete.



Figure 1-1

### To restore your data from a backup file to a new BlackBerry smartphone, complete the following steps

- A. Connect your new BlackBerry smartphone to the computer that is running the BlackBerry Desktop Manager using a USB cable.
- B. Open the BlackBerry Desktop Manager and Click on the “Device” menu at top. Next, select “Restore...” in the drop-down menu.
- C. You have the option of restoring all device data, or selected data:
  1. To restore all device data, select the backup file that you wish to restore by clicking on it, and then make sure “All device data and settings” is selected under “Select Data to Restore.”
  2. To restore specific device data, select the backup file that you wish to restore by clicking on it, then click on “Select device data and settings” under “Select Data to Restore.” Then, check the box for each type of data you wish to restore. [Figure 1-3]
- D. Click on “Restore,” and then click “Yes” to continue. Lastly, click on “Close” on the “Restore Complete” confirmation window. Your restored data will now appear on your new BlackBerry device.

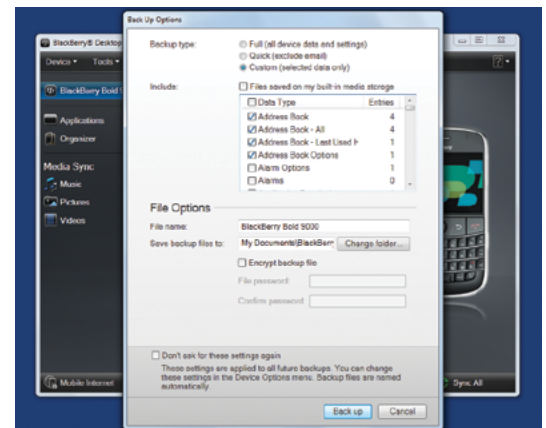


Figure 1-2

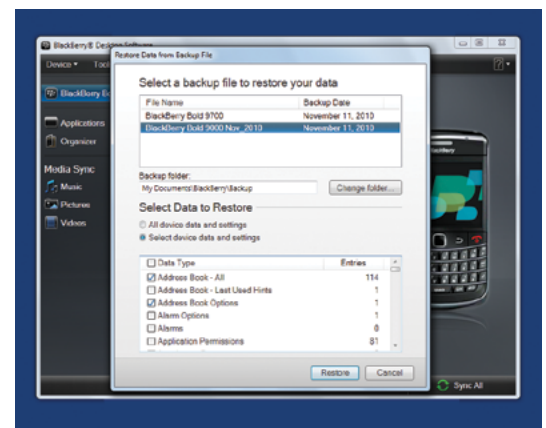


Figure 1-3